

JUNIOR LEAGUE OF LUFKIN

OUR VIEW

September 2022



Note from our President

JUNIOR LEAGUE OF LUFKIN

I want to begin by expressing the gratitude I hold for this amazing community. Our community has rallied together in the darkest of days and come out stronger. I am so amazed every day by the accomplishments of the Junior League of Lufkin members. As we handed out backpacks to students last week, I am reminded how much we can accomplish when we work together. The Back to School Bonanza committee and volunteers greeted families and listened to their stories. We all shared a smile and a moment of connection with the students we serve. As they begin the first day of school, I hope they know they have an entire community cheering them on.

I also have that same hope for our membership of the Junior League of Lufkin. We are cheering each other on. Some of our members have recently moved to Lufkin, some are welcoming new babies to their families, some are embarking on a new career path. Whatever the journey may be, I cannot think of a better group of ladies to join in my journey. As the year kicks off, I want to celebrate the accomplishments of the members that came before us. The Junior League of Lufkin is celebrating a rich 25 year history. We are so grateful for the ladies that have carried the torch and led us this far. Now this is our time, I know this group is ready to lead The Junior League of Lufkin into the new year. Whether you are a Helping Hands Sponsor, Community Member, or JLL Member we are excited for you to join us on the road ahead. Let's Go!

Alexis Hudson Pigg

JLL President, 2022-2023





JUNIOR LEAGUE OF LUFKIN

Governing Board of Directors

PRESIDENT - ALEXIS PIGG
EXECUTIVE VICE PRESIDENT - KAYLA SHIRLEY
EXECUTIVE VICE PRESIDENT ELECT - BECCA MCMAHON
SECRETARY - MACI DOVER
TREASURER - AIMEE MEYERS
STRATEGIC DEVELOPMENT/ADVISORY CHAIR - JACLYN HULTS
MEMBER AT LARGE - KIMBERLY GRAHAM
MEMBER AT LARGE - VIRY CRUZ
MEMBER AT LARGE - MORGAN NARANJO
NOMINATING CHAIR - BECKY COTA

Executive Management Team

EXECUTIVE VICE PRESIDENT - KAYLA SHIRLEY
EXECUTIVE VICE PRESIDENT ELECT - BECCA MCMAHON
ASSISTANT TREASURER - DANA HUGHES

V.P. COMMUNICATIONS
 MEGAN MORGAN HUFFORD

V.P. FUND DEVELOPMENT
 SYDNEY WHITE

V.P. MEMBERSHIP
 CARRIE HAWKINS

V.P. COMMUNITY PROJECTS
 CAROLINA LOPEZ

OUR VIEW - EDITOR
 CHELSEA NEGLEY

**INTERNAL PR/
 PHOTOGRAPHER**
 JESSICA HILL

EXTERNAL PR
 KAYLA SPRINGFIELD

HELPING HANDS CAMPAIGN
 SAVANNAH HANEY, CHAIR
 MORGAN WATSON, CO-CHAIR

RAFFLE
 AMANDA VENEGAS, CHAIR

RUMMAGE SALE
 CRISSY GARRETT, CHAIR
 ANDIE CARRIZALES, CO-CHAIR

GRANT WRITER
 MOLLY EMERY, CHAIR
 KATIE LIGHTFOOT, CO-CHAIR

LITTLE BLACK DRESS INITIATIVE
 BREANNA MURPHY, CHAIR
 YANETH CLIFTON, CO-CHAIR

PLACEMENT CHAIR
 KENDALL BEATTIE

**MEMBERSHIP RELATIONS
 & RETENTION CHAIR**
 STEPHANIE COLE

**LEADERSHIP DEVELOPMENT/
 MENTORING CHAIR**
 JENNIFER LACORTE

HOSPITALITY
 JILL WEBB-SANDERS, CHAIR
 ASHLEY CONLON, CO-CHAIR

PROVISIONAL TRAINER
 MISTY SPENCER - CHAIR
 ROBIN ALDERMAN - CO-CHAIR

**BACK TO SCHOOL
 BONANZA**
 ERIKA NEILL, CHAIR
 CAROLINE LESLIE, CO-CHAIR
 VIRY CRUZ,
 BACKPACK SUPPLY CO-CHAIR

**CAMP GET FIT/
 KIDS IN THE
 KITCHEN**
 JESSICA BARRETT, CHAIR
 SANDI ADAMS, CO-CHAIR

TOUCH-A-TRUCK
 HANNAH HANEY, CHAIR
 SAMANTHA MCELROY, CO-CHAIR

LIVING ON THE EDGE
 STEPHANIE KNOX, CHAIR
 THAI PHAM, CO-CHAIR

COMMUNITY OUTREACH
 KIM GRAHAM



CHAIR: JESSICA BARRETT
CO-CHAIR: SANDI ADAMS

PLACEMENT COMMITTEE

KAYLA GARRIS LADONNA ERWIN
GINIA LUKER CELIA LUNA
EMILY THORNTON DEMETRICE SPIKES



CHAIR: ERIKA NEILL
CO-CHAIR: CAROLINE LESLIE
BACKPACK SUPPLY CO-CHAIR: VIRY CRUZ

BUKNER PRE-REGISTRATION

CHAIR: KELSEY MASSEY
CO-CHAIR: SARA BAILEY

HAIR AND FEMINE PRODUCTS

CHAIR: TARSHA HENDERSON
CO-CHAIR: WHITNEY KENT

UNIFORMS AND ESSENTIALS

CHAIR: SARAH MORGAN
CO-CHAIR: SARAH HOOD

PUBLICITY & LOGISTICS

CHAIR: MEAGAN MOULDER
CO-CHAIR: BRITTANEY PARKER
COMMUNITY LIAISON: MEAGAN KIRTLEY
BACKPACK LIAISON: HANNAH KELLER

PLACEMENT COMMITTEE

MELANIE SHIRLEY
DANIELLE GARRETT



CHAIR: HANNAH HANEY

CO-CHAIR: SAMANTHA MCELROY

PARTNER CHAIR: CALLIE WALKER

VOLUNTEER COORDINATOR: JENNIFER NAVA

HOSPITALITY CHAIR: LAURA COWAN

PUBLICITY CHAIR: CAITLIN HEBERT

ENTERTAINMENT CHAIR: ANGELA BENNETT

CLASSROOM SPONSORSHIPS CHAIR: STEFANIE ROSS

VENDORS: KRISTEN KENDRICK

**SUB-COMMITTEE ASSIGNED VOLUNTEER SHIFT
(IN ADDITION TO YOUR PLACEMENT)**

SARAH HOOD
TRICIA FREEMAN
TARSHA HENDERSON
SARAH MORGAN
MEAGAN MOULDER



CHAIR: CRISSEY GARRETT

CO-CHAIR: ANDIE CARRIZALES

DONATIONS CO-CHAIR: HEATHER HATTON

PUBLICITY CO-CHAIR: LAUREN LUCE

SALES ADMINISTRATION: CHLOE ICE

VOLUNTEER COORDINATOR: LEIGHANNE HANCOCK

**SUB-COMMITTEE ASSIGNED VOLUNTEER SHIFT
(IN ADDITION TO YOUR PLACEMENT)**

DANIELLE GARRETT
HANNAH KELLER
MEGAN KIRTLEY
GINIA LUKER
CELIA LUNA
MORGAN NARANJO
BRITTANEY PARKER



CHAIR: SAVANNAH HANEY
CO-CHAIR: MORGAN WATSON
EVENT LIAISON: NICHOLE CHALA
SUSTAINER LIAISON: SARAH ALVIS

GRANT WRITER

CHAIR: MOLLY EMERY
CO-CHAIR: KATIE LIGHTFOOT

Hospitality

CHAIR: JILL WEBB-SANDERS
CO-CHAIR: ASHLEY CONLON

PLACEMENT COMMITTEE

KRISTA BROWN
ABRAM SOCIA

LIVING ON THE EDGE

A CLOSER LOOK AT POVERTY

CHAIR: STEPHANIE KNOX

CO-CHAIR: THAI PHAM

COMMUNITY OUTREACH: KIM GRAHAM

PLACEMENT COMMITTEE

SAMANTHA WRIGHT
STACEY YOUNGBLOOD

**SUB-COMMITTEE ASSIGNED VOLUNTEER SHIFT
(IN ADDITION TO YOUR PLACEMENT)**

SARA BAILEY
BECKY COTA
EMILY THORNTON



CHAIR: AMANDA VENEGAS

PLACEMENT COMMITTEE

EMILY WINSTON
BECKY COTA
LAUREN COX
MARIA CALDERA

**SUB-COMMITTEE ASSIGNED VOLUNTEER SHIFT
(IN ADDITION TO YOUR PLACEMENT)**

WHITNEY KENT
MELANIE SHIRLEY
ABRAM SOCIA
DEMETRICE SPIKES



CHAIR: BREANNA MURPHY
CO-CHAIR: YANETH CLIFTON

PLACEMENT COMMITTEE

ANGIE ROBERTSON
TRICIA FREEMAN

**SUB-COMMITTEE ASSIGNED VOLUNTEER SHIFT
(IN ADDITION TO YOUR PLACEMENT)**

LADONNA ERWIN
SAMANTHA WRIGHT
KELSEY MASSEY

BACK TO SCHOOL BONANZA

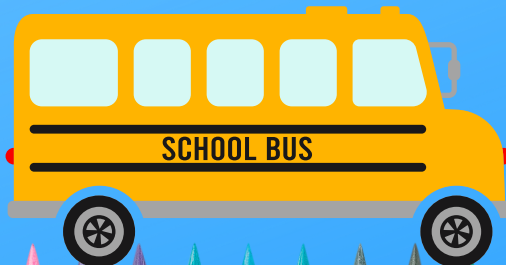
Community Spotlight



Chair: Erika Neill
Co-Chair: Caroline Leslie

Committee Members:

Whitney Kent	Tarsha Henderson
Sarah Morgan	Sarah Hood
Danielle Garrett	Brittany Parker
Viry Cruz	Meagan Moulder
Meagan Kirtley	Hannah Keller
Kelsey Massey	Melanie Shirley
Sara Bailey	



BACK TO SCHOOL BONANZA

Community Spotlight

The 12th annual Back to School Bonanza was great success! JLL now offers a drive-thru event, and participants have appreciated the efficiency of this model! This year, the committee shook things up by adding an additional day for supply pick-up, opening the event to both Friday, July 29th and Saturday July 30th. On Friday, families who were able to pre-register picked up their backpacks and essentials for the start of the new school year! Saturday was reserved for families who did not pre-register. Every aspect of the event ran smoothly and was a huge success!

There were 500 pre-registered families, which is more than ever before! We streamlined school clothing purchasing by placing a bulk order with our community partner, JCPenney. We conducted registration utilizing a Google form this year and it worked out great! I am proud of the committee's innovative thinking and work that made the event the best it could be.

Every year our community partners amaze us with how they show up and provide for our community. Woodland Heights Medical Center graciously stepped up and provided us with 500 pre stuffed feminine hygiene packs for the middle and high school girls of Angelina County. When we needed more volunteers, Timber Creek Church members stepped up in numbers. God's hands were all over this project!

Families came with smiling faces and were grateful to receive backpacks, supplies, clothes, shoes, and other essentials. Nearly 800 families participated in the two-day event, with a total of 1,908 individual children helped in starting their best school year yet!

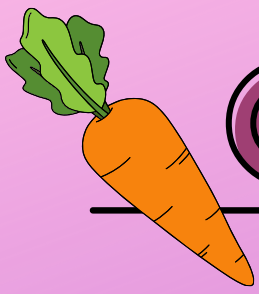
At the end of the event, the few remaining backpacks/supplies were taken by school districts, churches, and other non-profit organizations to be distributed to children who could not attend the event. I was humbled by the efforts of the Back to School Bonanza Committee. They were fun, team players and above all else, dedicated to our cause - even though they were hot and tired! Best of all, their servant hearts shined brightly!

I would like to take the opportunity to thank our league leadership, our 37 community partners, and the over 250 volunteers who were involved in this years B2BS. Our event is what is because of the leaders that came before us and has grown larger than our league because of our community partners and volunteers. Watching the community come together to make this event possible is overwhelming and shows just how much God is at work. As we gear up for the next League event, I ask that God continue to use the Junior League of Lufkin, its leaders, and volunteers to serve the community of Angelina County, and that our servant hearts continue to shine. This is truly a great organization filled with amazing women.

I can't wait to see what we do next!



Back to School Bonanza Chair, 2022



CAMP GET FIT



Community Spotlight



Chair: Jessica Barrett
Co-Chair: Sandi Adams

Committee members

- Celia Luna
- Demetrice Spikes
- Emily Thornton
- Ginia Luker
- Kayla Garris
- LaDonna Erwin-Brooks

The Junior League of Lufkin is known for always putting the children of Angelina County first and providing the best for our community. This year's Kids in the Kitchen + Camp Get Fit was no different. The camp was held at the Boys and Girls Club of Deep East Texas in Lufkin and is aimed at combating the rise of childhood obesity by educating the children of East Texas on making healthier choices and learning fun ways to stay active. Campers entering third and fourth grade participated in cooking, exercise, and healthy lifestyle educational sessions throughout the week.

The Junior League of Lufkin along with The Association of Junior Leagues International, Inc. have a long history of commitment to improving the health and wellness of children. Kids in the Kitchen is grounded in the belief that children and families empowered with the knowledge of how to feed and exercise their bodies will be less likely to become obese and subsequently suffer the many associated health risks. Campers were introduced to new foods they wouldn't normally try and learned how to make something new thanks to donations given by Brookshire Brothers and H-E-B. They were shown easy and healthy recipes they could make themselves by Daniel Dover from The Catch as well as other simple snacks from our committee members.

The fitness component of Camp Get Fit had campers moving in different ways to stay active and healthy while having fun. We had our own leaguers offering activities ranging from strength training and core exercises with Sandi Adams from FittLife to learning new dance moves with Hilary Walker during her Zumba instruction. We also had Chely James with 6 Gun Martial Arts show the campers how to stay fit with boxing. Lindsey Greer with Extreme Cheer showed them the importance of stretching and the benefits of supporting your team during fun games.

Our community partners put on classroom sessions that were a hit with the campers. Legacy Institute showcased how to be financially fit with an introduction on financial literacy. Legacy Institute also brought in their volunteers that are charged with maintaining the new Community Garden. The campers were thrilled to plant their own seeds to take home after learning about soil and how some of their favorite foods come from a seed. There were great conversations about healthy eating and the campers were so excited to start their own gardens. ADAC and The Coalition have always been eager to give of their time and encouraged our campers to make good decisions when it comes to peer pressure and vaping during this year's sessions.

Campers and Leaguers alike enjoyed the 2022 Kids in the Kitchen + Camp Get Fit Camp. It would not have been possible without our volunteers, sustainers, and donations from our community partners. It has been an honor to serve on the Kids in the Kitchen + Camp Get Fit committee for my first four years in the league.



Chair, Kids in the Kitchen + Camp Get Fit, 2022

MEET OUR PROVISIONALS



Aijlan Van Fossan



Bethany Hobbs



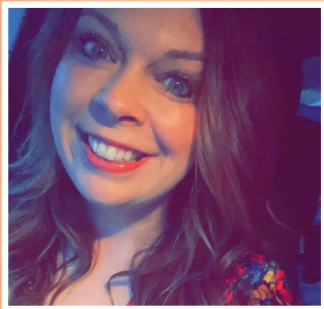
Brandi Simmons



Brenda Silva



Candice Halls



Cara Miller



Casey Adams



Chelley Farr



Christina Wood



Colleen Murray



Diana Dunman



Emily Holder



Jessica Bravo Moran



Jully King



Jordan Yarbrough



Kim Faulkner

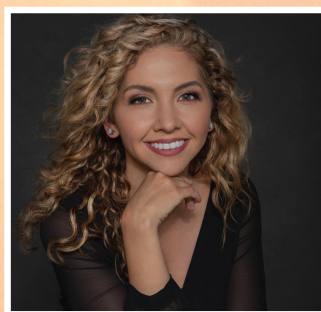
MEET OUR PROVISIONALS



Laura Beth Cooper



Maira Carrillo



Mayra Turner



Nancy Perez Jacob



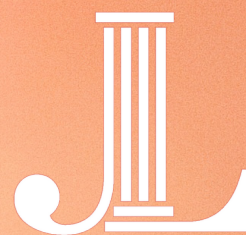
Stacy Frazier



Symphony Evans



Tiffany Brooks



Provisional Trainers
Chair: Misty Spencer
Co-Chair: Robin Alderman





Blue Hands Presenting Sponsors



JM Chevrolet • Cadillac



Blue Hands



Georgia-Pacific



Red Hands

WhataBurger
Austin Bank
Woodland Heights Medical Center
Commercial Bank of Texas

Purple Hands

Angelina Pediatrics
Lufkin Printing
Alexander, Lankford & Heirs
Skelton, Shusher, Barnhill, Watkins, Wells PLLC
Dr. Jimmy Pham
Buchanan Realty
Leo Trans Services
Tall Timbers Gymnastics
Goff & Herrington, PC
Real Graphics
Security and Guaranty
Crown Cozy Country Club
Amy Ross, DDS

Serving Hands

Janice Ann Rowe
Lorelle Coleman
Terece McKeven
Nancy Moore
Mary Martha Henderson
Martha Chandler
Dianne Croon
Barbara Ferguson
Lynda Langston
Lisa Haglund
Allyson Langston
LaDeen Pharr
Rebecca Chance

Green Hands

KSWP/KAVX
UBank
Abeld's Pharmacy
Audiological Services
Community Title
Morgan & Bartlett, Baggot & Shands
Insurance Agency
Arbor Resources, LLC
The Heart Institute of East Texas
Shafer Funeral Home
Carroway Funeral Home
The Meyers Law Firm
Raymond James Financial Services, Inc.

Sustaining Hands

Virginia Winston
JLL Sustainers
Lisa Warner
Carol Moore

Supporting Hands

Barbara Carter
Debra Lloyd
Mary Duncan
Mary Leah Duram
Donna Spore
Rona Friecon
Cindy Taylor
Nancy Reilly
Shelia Skelton
Cathy Todd
Kathryn Hensley
Vickie Evans
Michelle Briley
Dana Smithhart
Anita Caraway
Bobbi Robinson
Lynell Stover
Decca Glass

Thank you

OUR DONORS/COMMUNITY PARTNERS

6 Gun Martial Arts
Abeltd's Gaslight Pharmacy
ADAC
Alcohol and Drug Abuse Council
Angelina Beautiful Clean
Angelina Pediatrics
Angelina Rotary Club
Brookshire Brothers
Brookshire Brothers Charitable Foundation
Buckner Family Pathways Lufkin
Burke
Changing Lives Dance Center
Chick-Fil-A
Community Partners
Concerned Black Men of Lufkin
Delta Sigma Theta Sorority
Denman Avenue Baptist Church
East Texas Food Bank
Eastview United Pentecostal Church
Extreme Cheer
Family Crisis Center
First Baptist Church Lufkin
First Christian Church
First Missionary Baptist Church
First United Methodist Church Lufkin
Fitt Life
Goodwill
H-E-B
Hijinx
Integra Insurance

JC Penny
JLL Helping Hands Partners
JM Billboard Advertising
Just Kiddin' Around
Kiwanis Club
Legacy Institute Lice Clinics of America - East Texas
Logan's
Love Inc.
Lufkin Central Church of Christ
Lufkin ISD Police Department
Lufkin Police Department
Lufkin Rotary Club
McWilliams & Son
Office Depot
Orange Leaf
Pilgrim's
Skate Ranch
Smoothie King
Texas Roadhouse
The Catch
The Coalition
The Salvation Army Lufkin Corps
UBank
United Rentals
UrgentDoc
Whataburger
Woodland Heights