

JUNIOR LEAGUE OF LUFKIN

# OUR VIEW

JULY 2023





# JUNIOR LEAGUE OF LUFKIN

**2022-2023  
PLACEMENTS**

---

## Governing Board of Directors

**PRESIDENT - ALEXIS PIGG**  
**EXECUTIVE VICE PRESIDENT - KAYLA SHIRLEY**  
**EXECUTIVE VICE PRESIDENT ELECT - BECCA MCMAHON**  
**SECRETARY - MACI DOVER**  
**TREASURER - AIMEE MEYERS**  
**STRATEGIC DEVELOPMENT/ADVISORY CHAIR - JACLYN HULTS**  
**MEMBER AT LARGE - KIMBERLY GRAHAM**  
**MEMBER AT LARGE - VIRY CRUZ**  
**MEMBER AT LARGE - MORGAN NARANJO**  
**NOMINATING CHAIR - BECKY COTA**

---

## Executive Management Team

**EXECUTIVE VICE PRESIDENT - KAYLA SHIRLEY**  
**EXECUTIVE VICE PRESIDENT ELECT - BECCA MCMAHON**  
**ASSISTANT TREASURER - DANA HUGHES**

**V.P. COMMUNICATIONS**  
MEGAN MORGAN HUFFORD

---

**V.P. FUND DEVELOPMENT**  
SYDNEY WHITE

---

**V.P. MEMBERSHIP**  
CARRIE HAWKINS

---

**V.P. COMMUNITY PROJECTS**  
CAROLINA LOPEZ

---

**OUR VIEW - EDITOR**  
CHELSEA NEGLEY

**INTERNAL PR/  
PHOTOGRAPHER**  
JESSICA HILL

**EXTERNAL PR**  
KAYLA SPRINGFIELD

**HELPING HANDS CAMPAIGN**  
SAVANNAH HANEY, CHAIR  
MORGAN WATSON, CO-CHAIR

**RAFFLE**  
AMANDA VENEGAS, CHAIR

**RUMMAGE SALE**  
CRISSY GARRETT, CHAIR  
ANDIE CARRIZALES, CO-CHAIR

**GRANT WRITER**  
MOLLY EMERY, CHAIR  
KATIE LIGHTFOOT, CO-CHAIR

**LITTLE BLACK DRESS INITIATIVE**  
BREANNA MURPHY, CHAIR  
YANETH CLIFTON, CO-CHAIR

**PLACEMENT CHAIR**  
KENDALL BEATTIE

**MEMBERSHIP RELATIONS  
& RETENTION CHAIR**  
STEPHANIE COLE

**LEADERSHIP DEVELOPMENT/  
MENTORING CHAIR**  
JENNIFER LACORTE

**HOSPITALITY**  
JILL WEBB-SANDERS, CHAIR  
ASHLEY CONLON, CO-CHAIR

**PROVISIONAL TRAINER**  
MISTY SPENCER - CHAIR  
ROBIN ALDERMAN - CO-CHAIR

**BACK TO SCHOOL  
BONANZA**  
ERIKA NEILL, CHAIR  
CAROLINE LESLIE, CO-CHAIR  
VIRY CRUZ,  
BACKPACK SUPPLY CO-CHAIR

**CAMP GET FIT/  
KIDS IN THE  
KITCHEN**  
JESSICA BARRETT, CHAIR  
SANDI ADAMS, CO-CHAIR

**TOUCH-A-TRUCK**  
HANNAH HANEY, CHAIR  
SAMANTHA MCELROY, CO-CHAIR

**LIVING ON THE EDGE**  
STEPHANIE KNOX, CHAIR  
THAI PHAM, CO-CHAIR

**COMMUNITY OUTREACH**  
KIM GRAHAM



**CHAIR:** JESSICA BARRETT  
**CO-CHAIR:** SANDI ADAMS

**PLACEMENT COMMITTEE**

KAYLA GARRIS  
GINIA LUKER  
EMILY THORNTON

LADONNA ERWIN  
CELIA LUNA  
DEMETRICE SPIKES



**CHAIR:** ERIKA NEILL  
**CO-CHAIR:** CAROLINE LESLIE  
**BACKPACK SUPPLY CO-CHAIR:** VIRY CRUZ

**BUKNER PRE-REGISTRATION**

**CHAIR:** KELSEY MASSEY  
**CO-CHAIR:** SARA BAILEY

**HAIR AND FEMINE PRODUCTS**

**CHAIR:** TARSHA HENDERSON  
**CO-CHAIR:** WHITNEY KENT

**UNIFORMS AND ESSENTIALS**

**CHAIR:** SARAH MORGAN  
**CO-CHAIR:** SARAH HOOD

**PUBLICITY & LOGISTICS**

**CHAIR:** MEAGAN MOULDER  
**CO-CHAIR:** BRITTANEY PARKER  
**COMMUNITY LIAISON:** MEAGAN KIRTLEY  
**BACKPACK LIAISON:** HANNAH KELLER

**PLACEMENT COMMITTEE**

MELANIE SHIRLEY  
DANIELLE GARRETT



**CHAIR:** HANNAH HANEY  
**CO-CHAIR:** SAMANTHA MCELROY  
**PARTNER CHAIR:** CALLIE WALKER  
**VOLUNTEER COORDINATOR:** JENNIFER NAVA  
**HOSPITALITY CHAIR:** LAURA COWAN  
**PUBLICITY CHAIR:** CAITLIN HEBERT  
**ENTERTAINMENT CHAIR:** ANGELA BENNETT  
**CLASSROOM SPONSORSHIPS CHAIR:** STEFANIE ROSS  
**VENDORS:** KRISTEN KENDRICK

**SUB-COMMITTEE ASSIGNED VOLUNTEER SHIFT  
(IN ADDITION TO YOUR PLACEMENT)**

SARAH HOOD  
TRICIA FREEMAN  
TARSHA HENDERSON  
SARAH MORGAN  
MEAGAN MOULDER



**CHAIR:** CRISSY GARRETT  
**CO-CHAIR:** ANDIE CARRIZALES  
**DONATIONS CO-CHAIR:** HEATHER HATTON  
**PUBLICITY CO-CHAIR:** LAUREN LUCE  
**SALES ADMINISTRATION:** CHLOE ICE  
**VOLUNTEER COORDINATOR:** LEICHANNE HANCOCK

**SUB-COMMITTEE ASSIGNED VOLUNTEER SHIFT  
(IN ADDITION TO YOUR PLACEMENT)**

DANIELLE GARRETT  
HANNAH KELLER  
MEGAN KIRTLEY  
GINIA LUKER

CELIA LUNA  
MORGAN NARANJO  
BRITTANEY PARKER



**CHAIR:** SAVANNAH HANEY  
**CO-CHAIR:** MORGAN WATSON  
**EVENT LIAISON:** NICHOLE CHALA  
**SUSTAINER LIAISON:** SARAH ALVIS

**GRANT WRITER**

**CHAIR:** MOLLY EMERY  
**CO-CHAIR:** KATIE LIGHTFOOT

**Hospitality**

**CHAIR:** JILL WEBB-SANDERS  
**CO-CHAIR:** ASHLEY CONLON

**PLACEMENT COMMITTEE**  
KRISTA BROWN  
ABRAM SOCIA

**LIVING ON THE EDGE**

A CLOSER LOOK AT POVERTY

**CHAIR:** STEPHANIE KNOX  
**CO-CHAIR:** THAI PHAM  
**COMMUNITY OUTREACH:** KIM GRAHAM

**PLACEMENT COMMITTEE**

SAMANTHA WRIGHT  
STACEY YOUNGBLOOD

**SUB-COMMITTEE ASSIGNED VOLUNTEER SHIFT  
(IN ADDITION TO YOUR PLACEMENT)**

SARA BAILEY  
BECKY COTA  
EMILY THORNTON



**CHAIR:** AMANDA VENEGAS

**PLACEMENT COMMITTEE**

EMILY WINSTON  
BECKY COTA  
LAUREN COX  
MARIA CALDERA

**SUB-COMMITTEE ASSIGNED VOLUNTEER SHIFT  
(IN ADDITION TO YOUR PLACEMENT)**

WHITNEY KENT  
MELANIE SHIRLEY  
ABRAM SOCIA  
DEMETRICE SPIKES



**CHAIR:** BREANNA MURPHY  
**CO-CHAIR:** YANETH CLIFTON

**PLACEMENT COMMITTEE**

ANGIE ROBERTSON  
TRICIA FREEMAN

**SUB-COMMITTEE ASSIGNED VOLUNTEER SHIFT  
(IN ADDITION TO YOUR PLACEMENT)**

LADONNA ERWIN  
SAMANTHA WRIGHT  
KELSEY MASSEY

Wow!! I just cannot believe another league year has come to an end! With the constraints of covid in the rear view mirror, this year finally felt back to normal and much busier!!

We started out 2022 with our provisional team building in June, bringing an AMAZING new group of talented, hardworking women to JLL!! I knew from that day, this group would be special. They have surpassed every expectation and gone above and beyond with their class project focusing on mental health and wellness. I am excited to see them flourish in their positions next year within the league! Kudos to their wonderful leaders, Misty Spencer and Robin Alderman!

July brought us Camp Get Fit and Back to School Bonanza! My son was born in between both events. Taking a step back was hard for me personally, but it was so fun to watch from afar! Camp Get Fit week was full of activities, guest helpers, and lots of yummy healthy snacks! We partnered again with Boys and Girls Club and, even though COVID tried to rear its ugly head, the positivity of our committee and the kids made this week a true success!! Thank you to Sandi Adams, who stepped into leadership when the chair, Jessica Barnett, fell ill. Back to School Bonanza was soon to follow with a record amount of backpack sign-ups, thanks to the implementation of online registration! Erika Neill and Caroline Oates knocked it out of the park! The day was full of serving and giving to kiddos of our county, so that they were equipped with backpacks, clothes, shoes and all of the items they needed to start their school year off successfully. This amazing community event went smoothly thanks to the chairs and their hardworking committee!

If we didn't think Fall could get any busier, we started the school year with general meetings, Little Black Dress Initiative, Living on the Edge (Kids Closets and Poverty Simulation) and Rummage Sale! The members of LBDI stayed focused and kept our social media campaign to raise awareness of women and children in poverty alive. The funds raised from LBDI are used to give back to our community in the form of grants, scholarships, and help fund our community projects. Thank you to Beanna Murphy, Yaneth Clifton and their committee for all of their hard work! Living on the Edge jumped into a new project this year, Kids Closets! Teaming up with Just Kiddin Around was a game changer this year!! This committee gave buckets full of clothes, shoes, personal hygiene items, ponytails, shoe strings.... They asked and JLL and JKA provided! We are so thankful for our new community partner JKA and Ashley Berry and are excited to see what the future holds for Kids Closets. We ended the fall season with Rummage Sale! This is a very work intensive event, and this committee did it with a positive attitude and a smile on their faces with their fearless leaders Chrissy Garrett and Andie Carrizales. We are so thankful for the donations made by members of our league, JLL sustainers and members of our community, so that families could purchase items, gifts, and clothes to prepare for the holiday season. Rummage Sale had a record amount of voucher redemptions, leading us to new avenues and a new name for the future!! Goods for Growth Mercantile 2023 will be a great new twist on Rummage Sale and I cannot wait to see it come to fruition!

Winter came and we celebrated the holidays with our wonderful sustainers at the annual Holiday Party. After ringing in the new year JLL took an internal look at our league with retreats, check-in's and a member favorite, cottage meetings! It is such a wonderful time to reflect, prepare, meet new faces and learn a little more about JLL.

Spring arrived and brought us Raffle with a Mission and Touch-A-Truck! Amanda Venegas put her spin and enthusiasm on this event, bringing back the hunting and fishing license and getting everyone pumped to sell their tickets. Because of her and her committee, this event had a bit of a revival and people from all over received awesome prizes! Touch-A-Truck landed on a perfect, sunny day and families flocked to the convention center to pet animals, touch vehicles, get their face painted and watch the helicopter land and take off! What a great way to bring our community together and set the tone for a fun filled spring! Thank you to Hannah Haney, Smatha McLeroy and the TAT crew for a job well done!

Helping Hands Membership and the Communications Team, I did not forget about you! These three committees are the cogs that turn together to make our JLL machine work! They work all year with both fundraisers and community projects and behind the scenes to make sure our members, businesses, churches, and nonprofits that give to the league and our community are recognized and celebrated. A big shout out to Savannah Haney and Morgan Watson for all their hard work in organizing Helping Hands! Thank you to Carrie Hawkins and all of the membership committee, for keeping the member boat afloat. Finally, thank you to Megan Morgan Hufford and the comms team for keeping everything communications buzzing, so that our community can see the AWESOME things JLL is up to all year long!!

It is so wonderful to reflect on an AMAZING year, and I need to take the time to honor and thank the Management Team for a job well done. I couldn't have asked for a better group of women to work alongside. Each and every one of you is smart, driven, talented and brings their own super-strength to JLL. It has been an honor to serve with you this year and a blessing to get to know each of you! You have big futures ahead professionally, personally and in JLL. THANK YOU!!

Junior League of Lufkin, thank you for making my final year as an active wonderful!!! I will be rooting for you from the sidelines as your biggest cheerleader!!

I LOVE JLL!



Kayla Shirley

EXECUTIVE VICE PRESIDENT



## PROVISIONAL PROJECT

# The 2022-2023 Provisional Class' Project Mental Health Mondays Social Media Campaign

Each year, as a new class of provisional members join the fold, they undertake training on membership rules, participate in team building exercises, volunteer at all of our events, design and sell an annual t-shirt, and put together a class project.

When the Provisional Class first began sharing ideas for a class project, there were a lot of big voices. Passionate pleas for advocacy, presentations and conversations about personal impact. More than a few tears were shared, and it became evident quite quickly that a consensus had been found.

The group unanimously agreed that services for mental health were in great need in our area, and that Junior League's mission to better the lives of women and children in our area directly aligned with the class' project idea.

But the concept to spotlight mental health needed focus. Classmates shared ideas like a walk, benefit event, or an in-school resource available for kids. Knowing that their project needed to make the greatest impact with only volunteer time and effort, they decided on a social media campaign.

The idea was to host Mental Health Mondays during the month of May - which just happens to be Mental Health Awareness Month. The social media campaign would act as a prompt to open conversations in our community and reduce the stigma related to the topic.

In order to initiate the campaign, classmates split into groups to tackle marketing, research and design. An overarching theme utilizing the mental health awareness ribbon color of green was developed, and the group got to work developing content.

Laura Beth Cooper, a provisional class member, psychologist and owner of Connections Counseling here in Lufkin, developed Self Care and Mental Health Wellness plans. She then presented these resources before the April General Meeting, walking the League through thought provoking questions.

Maira Carrillo, local attorney, researched how mental health impacts women. "We are biologically different than men-nurturers but we also need to be strong and placing the needs of others above our own.

We are at a higher risk of mental illness, with an estimated 7% of women affected by serious mental illness in 2020 as compared with 4% in men in the US. As for depression and anxiety, we are our own worst critics and are harder on ourselves, and we focus on the negative. We tend to isolate ourselves and think we can handle it on our own. Women are more empathetic and caring.

We are pressured by society to look a certain way, bounce back after pregnancy, and often carry the mental load for our families."

Other classmates like Ajlan Van Fossan and Bethany Hobbs researched the impact on children and the correlation poverty has on one's mental health. What they found was both shocking and heartbreaking.

### **Mental Health is linked to poverty, and our community is at a high risk:**

- Texas is ranked last in the nation for access to mental health resources.
- Texas has the highest rate of uninsured people in the country.
- In Angelina County 1 in 4 are facing food insecurity
- In Angelina County almost 13% of families live in poverty
- 10.6% of children suffer from severe depression
- Between 2007 and 2018 suicide rates among youth have increase by 57%
- Of the more than 2 million people suffering from severe depression, only 27% receive treatment.

With this newfound knowledge, the group wrote public service announcements, designed marketing tools for the campaign and got ready to host the social media discussion.

After presenting to the full League, the class encouraged all members to interact both with the campaign online, but to also use the tools and resources included offline - to reach out to their family and friends, check-in on those at risk, and to help reduce the stigma of talking about one's mental health.

The class aims to continue the conversation long after May, with a goal to extend services and resources to women and children in the area that are at greatest risk and need.



Featured above are some of the class members after making a presentation for the campaign during April's General Meeting. From Left to Right: Mayra Turner, Kim Faulkner, Bethany Hobbs, Maira Carrillo, Chelley Farr, Laura Beth Cooper, Ajlan Van Fossan

# touch-a-truck

---

Community Spotlight

Our 9th annual Touch a Truck event was held on Saturday, March 4th at the Pitser Garrison Convention Center. From community members and volunteers, a limo, helicopter, army trucks, and concrete trucks the convention center parking lot was full of excitement and learning! Families enjoyed exploring the vehicles and getting to meet those who build, protect, and serve our community. The day also included face painting, an inflatable slide, food trucks, a photo booth, and music provided by Courtney Trapp!

Classroom sponsorships play a huge role in the success of Touch a Truck each year. This year we had a total of 124 classrooms sponsored throughout Angelina County. The sponsored classrooms gave 2,400 kids in our community the opportunity to attend Touch a Truck for free! In addition, we had approximately 450 wristbands sold at the gate the day of the event.

Touch a Truck 2023 was fortunate to be supported by a large number of sponsors, including our presenting sponsor, JM Chevrolet. I am also thankful for the hard working and dedicated Touch a Truck committee that gave numerous hours to make this event a success!



*Hannah Hancy*  
Touch-a-Truck Chair, 2023

# touch-a-truck

Community Spotlight



# Raffle with a Mission

---

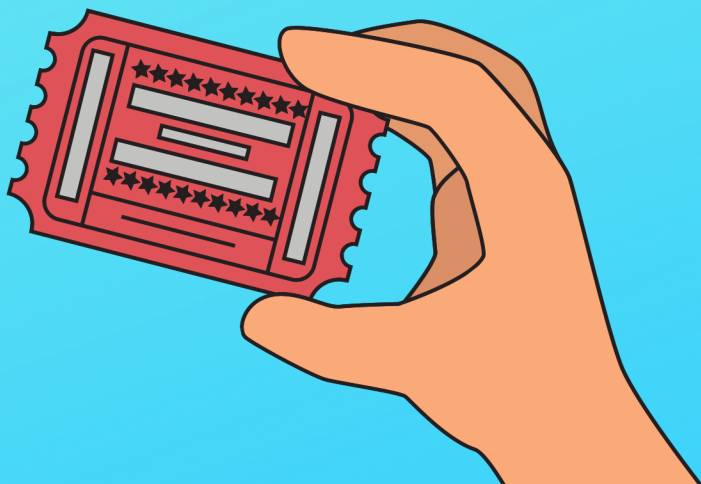
Community Spotlight

Raffle with a Mission had yet another successful year thanks to our generously giving community!

We had 17 AWESOME prizes valued at over \$7,000, including the Grand Prize of a Lifetime Hunting and Fishing License worth \$1,800, donated by Allen Loggins & Son, Inc. and Buckeye Construction!

We could not have done this without each of our 18 local donors and the hundreds of people who purchased tickets! Every year we call on local businesses to donate and there is never any hesitation from our wonderful community to give! The proceeds from our ticket sales go directly back into our projects for our community such as, Back to School Bonanza, Camp Get Fit, Touch-a-Truck, Rummage Sale, the Little Black Dress campaign, Living on the Edge - poverty simulation, and local scholarship awards.

JM Chevrolet graciously hosted our live drawing again this year as we drew the names of our 17 winners. The Junior League of Lufkin would like to give a HUGE thank you to our wonderful community that helps make this event happen each and every year!



*Amanda Venegas*

Raffle with a Mission Chair, 2023



# Raffle with a Mission

Community Spotlight



JM Chevrolet • Cadillac



Presents



Benefitting



# Volunteers of the Year



## **Kayla Shirley**

Executive Vice President

Congratulations to our Volunteer of the Year, Kayla Shirley!

Kayla currently serves as our Executive Vice President, and she exemplifies what it means to be a member of the Junior League of Lufkin.

Thank you for your service and hard work, Kayla!



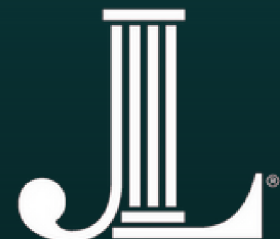
## **SUSAN BELASCO**

SUSTAINER VOLUNTEER OF THE YEAR

Congratulations to our Sustainer Volunteer of the Year, Susan Belasco!

Thank you for your service and hard work, Susan!

Thank you 





# GRANT RECIPIENTS

*"Alone we can do so little, together we can do so much"*

Boys and Girls Club

East Texas Food Bank

Family Crisis Center

Hospice in the Pines

LISD

Mantooth House



# GRANT RECIPIENTS

*"Alone we can do so little, together we can do so much"*

Angelina County Second  
Helping Hands

Pregnancy Help Center  
of Lufkin

Seasons of Hope

Texas Forestry Museum

Volunteer Services Council  
Lufkin State Supported Living

Angelina Arts



# SCHOLARSHIP RECIPIENTS



*"oh the places you'll go!"*

**Sariah Cruz**  
Pineywoods Community Academy

**Sonora Day**  
Hudson ISD

**Mckenzie McCaslin**  
Huntington ISD

**Leyda Ibarra**  
Diboll ISD

**Allyson Lea**  
Lufkin ISD



# JUNIOR LEAGUE OF LUFKIN

---

## Governing Board of Directors

**PRESIDENT** - ALEXIS PIGG  
**EXECUTIVE VICE PRESIDENT** - BECCA MCMAHON  
**EXECUTIVE VICE PRESIDENT ELECT** - MACI DOVER  
**SECRETARY** - CAROLINA LOPEZ  
**TREASURER** - DANA HUGHES  
**STRATEGIC DEVELOPMENT/ADVISORY CHAIR** - SYDNEY WHITE  
**MEMBER AT LARGE** - JILL WEBB-SANDERS  
**MEMBER AT LARGE** - AIMEE MEYERS  
**MEMBER AT LARGE** - MORGAN NARANJO  
**NOMINATING CHAIR** - JACLYN HULTS

---

## Executive Management Team

**EXECUTIVE VICE PRESIDENT** - BECCA MCMAHON  
**EXECUTIVE VICE PRESIDENT ELECT** - MACI DOVER  
**ASSISTANT TREASURER** - KATIE LIGHTFOOT

**V.P. COMMUNICATIONS**  
VIRY CRUZ

---

**OUR VIEW - EDITOR**  
JENNIFER LACORTE

**INTERNAL PR/  
PHOTOGRAPHER**  
JULLY KING

**EXTERNAL PR**  
MEGAN MOULDER

**V.P. FUND DEVELOPMENT**  
MEGAN MORGAN HUFFORD

---

**HELPING HANDS CAMPAIGN**  
MORGAN WATSON, CHAIR  
KAYLA SPRINGFIELD, CO-CHAIR

**RAFFLE**  
AMANDA VENEGAS, CHAIR  
HANNAH HANEY, CO-CHAIR

**RUMMAGE SALE**  
ANDIE CARRIZALES, CHAIR  
NICHOLE CHALA, CO-CHAIR

**GRANT WRITER**  
JACLYN HULTS, CHAIR  
ANGELA BENNETT, CO-CHAIR

**LITTLE BLACK DRESS INITIATIVE**  
YANETH CLIFTON, CHAIR  
SYMPHONY EVANS, CO-CHAIR

**V.P. MEMBERSHIP**  
KENDALL BEATTIE

---

**PLACEMENT CHAIR**  
MISTY SPENCER

**MEMBERSHIP RELATIONS  
& RETENTION CHAIR**  
SAVANNAH HANEY

**LEADERSHIP DEVELOPMENT/  
MENTORING CHAIR**  
LAURA COWAN

**HOSPITALITY**  
JILL WEBB-SANDERS, CHAIR  
CHLOE SHOFNER, CO-CHAIR

**PROVISIONAL TRAINER**  
ROBIN ALDERMAN - CHAIR  
AIMEE MEYERS - CO-CHAIR

**V.P. COMMUNITY PROJECTS**  
LAUREN LUCE

---

**BACK TO SCHOOL  
BONANZA**  
CAROLINE LESLIE, CHAIR  
KELSEY MASSEY, CO-CHAIR

**CAMP GET FIT/  
KIDS IN THE  
KITCHEN**  
SANDI ADAMS, CHAIR  
CASEY ADAMS, CO-CHAIR

**TOUCH-A-TRUCK**  
SAMANTHA MCLEROY, CHAIR  
CALLIE WALKER, CO-CHAIR

**LIVING ON THE EDGE**  
STEPHANIE KNOX, CHAIR  
BREANNA MURPHY, CO-CHAIR

**COMMUNITY OUTREACH**  
LAURA COOPER

# 2023-2024 PLACEMENTS

## Hospitality



**CHAIR:** SANDI ADAMS  
**CO-CHAIR:** CASEY ADAMS

### PLACEMENT COMMITTEE

AJLAN VAN FOSSAN  
CHRISTINA WOOD  
ABRAM SOCIA

KAYLA GARRIS  
MAYRA TURNER



**CHAIR:** CAROLINE LESLIE  
**CO-CHAIR:** KELSEY MASSEY

**BUKNER PRE-REGISTRATION**  
**CHAIR:** SARA BAILEY  
**CO-CHAIR:** STACEY YOUNGBLOOD

**PUBLICITY & LOGISTICS**  
**CHAIR:** BRENDA SILVA  
**CO-CHAIR:** JESSICA MORAN  
**COMMUNITY LIAISON:** ERIKA NEILL

**CHAIR:** JILL WEBB-SANDERS  
**CO-CHAIR:** CHLOE SHOFNER

**HAIR AND FEMINE PRODUCTS**  
**CHAIR:** TARSHA HENDERSON

**MEMBER AT LARGE**  
MELANIE SHIRLEY

### PLACEMENT COMMITTEE

CHELLEY FARR  
STACEY FRAZIER

**UNIFORMS, CLOTHES AND BACKPACKS**  
**CHAIR:** SARAH TAYLOR  
**CO-CHAIR:** SARAH HOOD  
**BACKPACK LIAISON:** WHITNEY KENT



**CHAIR:** SAMANTHA MCELROY  
**CO-CHAIR:** CALLIE WALKER  
**PARTNER CHAIR:** JENNIFER NAVA  
**VOLUNTEER COORDINATOR:** EMILY HOLDER  
**HOSPITALITY CHAIR:** MAYRA TURNER  
**PUBLICITY CHAIR:** KRISTEN KENDRICK  
**ENTERTAINMENT CHAIR:** BETHANY HOBBS  
**CLASSROOM SPONSORSHIPS CHAIR:** ABRAM SOCIA  
**VENDORS:** DIANA DUNMAN



**CHAIR:** ANDIE CARRIZALES  
**CO-CHAIR:** NICHOLE CHALA  
**INVENTORY CO-CHAIR:** CRISSY GARRETT  
**PUBLICITY CO-CHAIR:** CELIA LUNA  
**SALES ADMINISTRATION:** ANGIE ROBERTSON  
**VOLUNTEER COORDINATOR:** LEIGHANNE HANCOCK  
**MEMBER AT LARGE:** ERIKA NEILL



**CHAIR:** MORGAN WATSON  
**CO-CHAIR:** KAYLA SPRINGFIELD  
**EVENT LIAISON:** MORGAN NARANJO  
**SUSTAINER LIAISON:** CHELSEA NEGLEY

### SUB-COMMITTEE ASSIGNED VOLUNTEER SHIFT (IN ADDITION TO YOUR PLACEMENT)

LADONNA ERWIN-BROOKS  
DEMETRICE SPIKES  
KIM FAULKNER  
STACEY FRAZIER  
COLLEEN MURRAY

### SUB-COMMITTEE ASSIGNED VOLUNTEER SHIFT (IN ADDITION TO YOUR PLACEMENT)

NANCY JACOB  
SARA BAILEY  
LAURA COOPER

MAIRA CARRILLO  
BRENDA SILVA  
EMILY HOLDER

## GRANT WRITER

**CHAIR:** JACLYN HULTS  
**CO-CHAIR:** ANGELA BENNETT

## LIVING ON THE EDGE

A CLOSER LOOK AT POVERTY

**CHAIR:** STEPHANIE KNOX  
**CO-CHAIR:** BREANNA MURPHY  
**COMMUNITY OUTREACH:** LAURA COOPER

### PLACEMENT COMMITTEE

COLLEEN MURRAY  
NANCY JACOB  
KIM FAULKNER



**CHAIR:** AMANDA VENEGAS  
**CO-CHAIR:** HANNAH HANEY

### PLACEMENT COMMITTEE

DEMETRICE SPIKES  
LADONNA ERWIN-BROOKS  
HEATHER HATTON



**CHAIR:** YANETH CLIFTON  
**CO-CHAIR:** SYMPHONY EVANS

### PLACEMENT COMMITTEE

JESSICA BARRETT  
ASHLEY CONLON  
MAIRA CARRILLO

### SUB-COMMITTEE ASSIGNED VOLUNTEER SHIFT (IN ADDITION TO YOUR PLACEMENT)

AJLAN VAN FOSSAN  
CHRISTINA WOOD  
JENNIFER NAVA  
KRISTEN KENDRICK  
JESSICA BARRETT

### SUB-COMMITTEE ASSIGNED VOLUNTEER SHIFT (IN ADDITION TO YOUR PLACEMENT)

DIANE DUNMAN  
JESSICA MORAN  
MELANIE SHIRLEY  
SARA TAYLOR  
SARAH TAYLOR  
BETHANY HOBBS

### SUB-COMMITTEE ASSIGNED VOLUNTEER SHIFT (IN ADDITION TO YOUR PLACEMENT)

CHELLEY FARR  
SARAH HOOD  
WHITNEY KENT